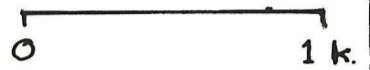


KEANEY KOUNTRY KAPER

W.A.R.A.'s first country 6 hour

March 1998

SCALE
1:25000

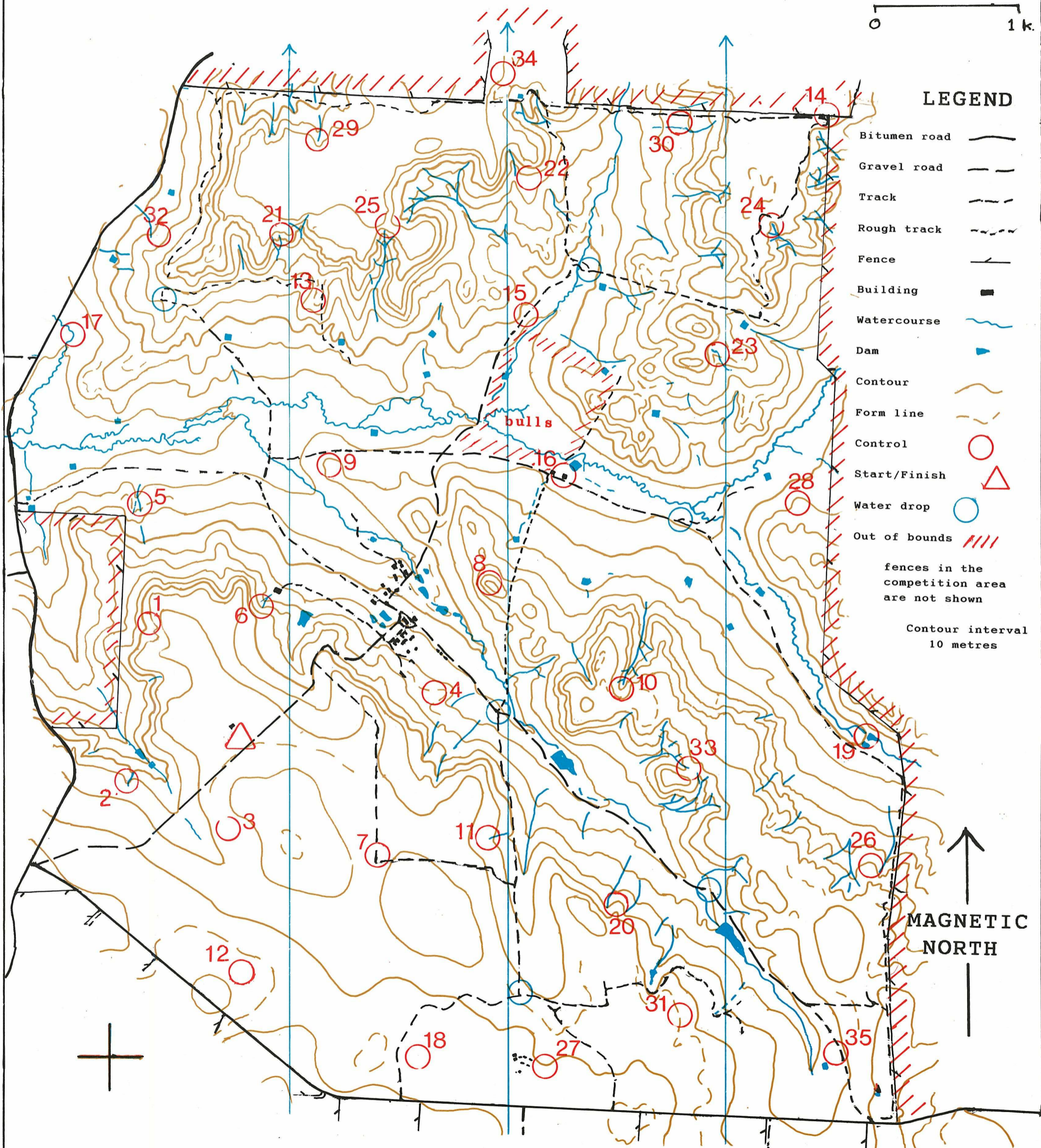


LEGEND

- Bitumen road
- Gravel road
- Track
- Rough track
- Fence
- Building
- Watercourse
- Dam
- Contour
- Form line
- Control
- Start/Finish
- Water drop
- Out of bounds

fences in the competition area are not shown

Contour interval
10 metres

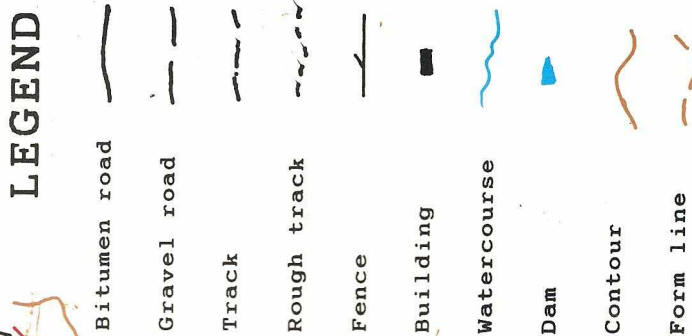


The W.A. Rogaining Association thanks Keaney College for permitting competitors to use its land for this event

KEANEY KOUNTRY KAPER

W.A.R.A.'s first country 6 hour
March 1998

SCALE
1:25000



CONTROL NUMBER	DESCRIPTION	POINTS
1	the gully junction (indistinct)	10
2	the head of the gully	10
3	a lone ringbarked tree	10
4	the top of the spur among pines	10
5	a fodder bin, south side	20
6	the head of the southern watercourse	20
7	a sheep yard, northwest corner	20
8	a statue, then due north 30 metres	20
9	the summit	30
10	the head of the watercourse	30
11	the head of the watercourse	30
12	a fence corner, then 330 metres at 125°	30
13	a rocky knoll at the end of the spur	40
14	the fence corner	40
15	a (paddy's) gate, then 70 metres East	40
16	the eastern shed, north side	40
17	the bend in the watercourse	50
18	a white sock	50
19	the watercourse below the dam	50
20	on the spur	50
21	the head of the eastern watercourse	60
22	a 1.8 metre boulder, north side	60
23	an occasional waterfall	60
24	the head of the north-eastern watercourse	60
25	the saddle, north-west end	70
26	on the spur	70
27	a row of tanks, north-east side	70
28	the end of the spur	70
29	the head of the watercourse	80
30	a 1 metre termite mound in the gully	80
31	a pair of marri trees, between	80
32	a lone tree	90
33	on the saddle	90
34	a gravel pit (100m X 50m), northern tip	100
35	a ruin, inside	100

